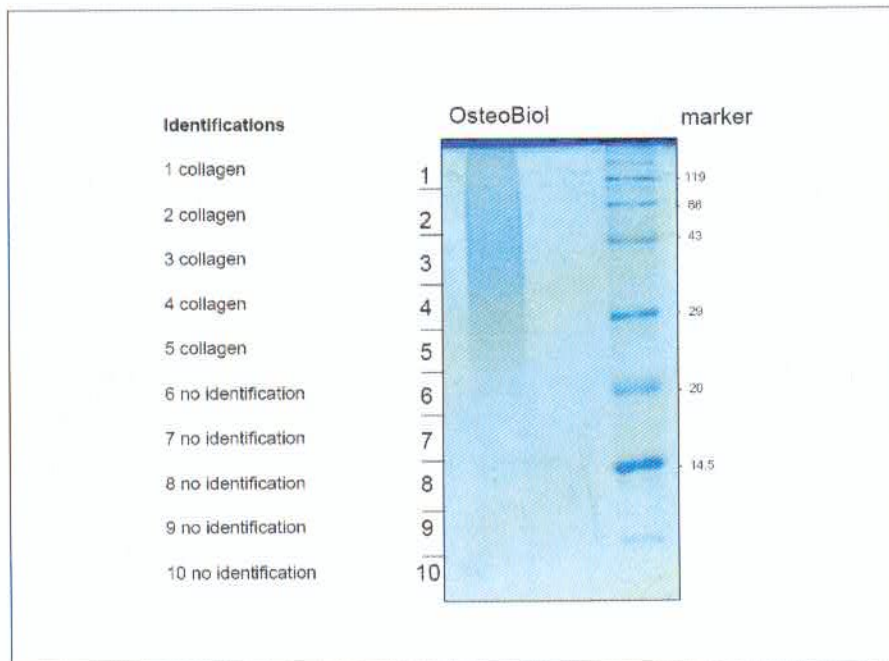


Berlin, 17.03.2009

## Analysis results from "OsteoBiol Gen-Os", TecnoSS

We used 600mg "OsteoBiol Gen-Os" for protein isolation in our analysis from 07.02. - 10.03.2009. These proteins were separated via 1D SDS-PAGE. The separated proteins (one lane) were fractionated in ten portions and analysed with nano-LC-ESI MS/MS. In the fractions 1-5 in the range from 20-200kDa we found only collagen. In the fractions 6-10 we identify no protein.



Karola Lehmann



**PROTEOME FACTORY AG**  
Dorotheenstr. 94 · 10117 Berlin  
Fon/FAX: +49 (0)700 - 7768 3663  
www.proteomefactory.com  
Your Competent Partner in Proteomics

Proteome Factory AG  
Dorotheenstr. 94  
10117 Berlin

info@proteomefactory.com  
www.proteomefactory.com

Vorstand:  
Dr. Christian Scheler  
Aufsichtsrat:  
Dr. Dirk Vollenbroich (Vors.)  
Prof. Dr. Johann Salnikow  
Prof. Dr. Manfred Scheler

Amtsgericht Berlin HRB 80652  
Ust-Id-Nr.: DE 21579 2970  
Steuernummer: 5041813  
Berliner Volksbank  
BLZ 100 900 00  
Kto. Nr.: 70 4373 8008